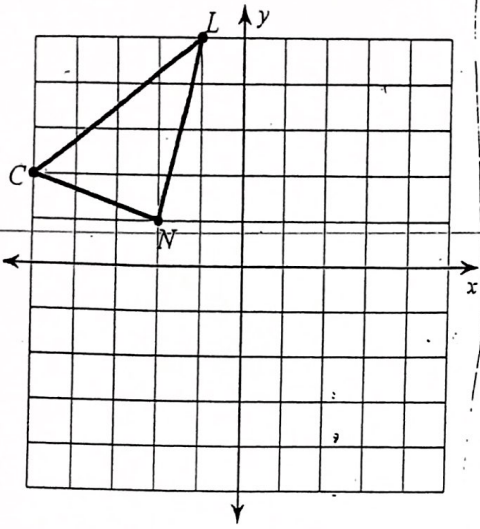


G2 B Level Test Review

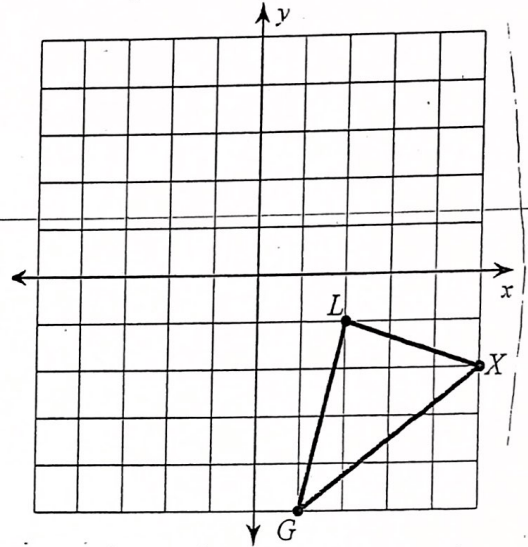
Date _____ Period _____

Perform the following transformations. Label all transformations using prime notation.

- 1) Reflect the image across the y-axis and then rotate it 90 degrees clockwise.



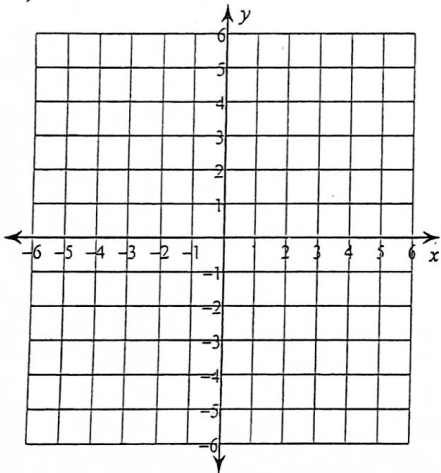
- 2) Translate the image according to the rule $(x, y) \rightarrow (x - 4, y + 3)$ and then reflect it across the line $y = -x$.



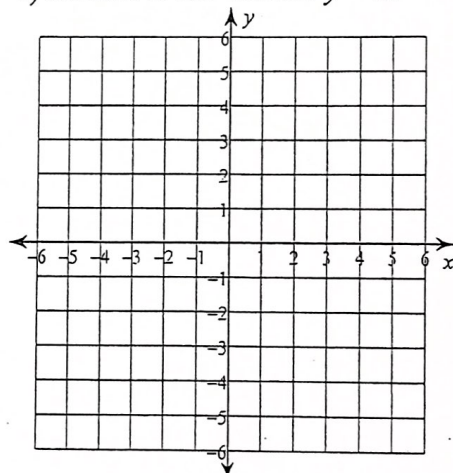
For 3-4, plot the points to make a shape and then perform the transformations.

Label all transformations using prime notation.

- 3) a) Plot A(-5, -2), B(-4, -5), C(-1, -5)
 b) Reflect ABC across the y-axis.
 c) Reflect A'B'C' across the x-axis.



- 4) a) Plot D(-2, 1), E(-4, 1), F(-4, 3)
 b) Reflect DEF across the x-axis.
 c) Reflect D'E'F' across $y = x$.



Use problem 3 to answer problem 5.

- 5) Describe a single transformation to go from triangle ABC to triangle A''B''C''. State the type of transformation and how far it went. Also write the rule using $(x, y) \rightarrow (x', y')$ notation.

Type: _____

Description: _____

Rule: _____

Use problem 4 to answer problem 6.

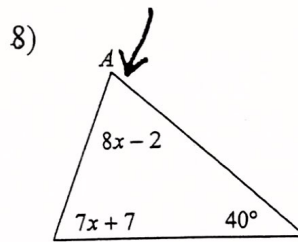
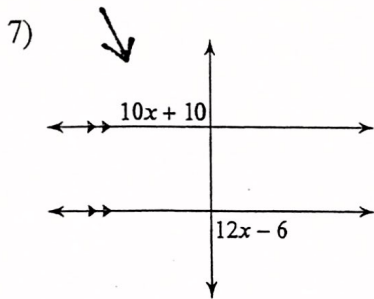
- 6) Describe a single transformation to go from triangle DEF to triangle D''E''F''. State the type of transformation and how far it went. Also write the rule using $(x, y) \rightarrow (x', y')$ notation.

Type: _____

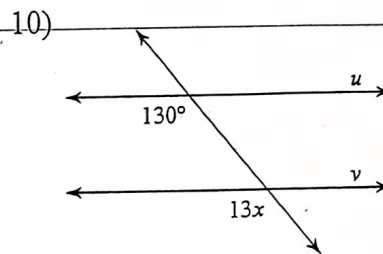
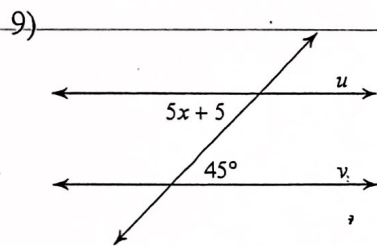
Description: _____

Rule: _____

Find the measure of the angle indicated with the arrow.



Find the value of x that makes lines u and v parallel.



Use Figure 1 to answer problems 11 - 14. Figure is not drawn to scale.

11) What is the measure of angle 4? State how you know.
 Angle 4 = _____
 Reason: _____

12) What is the measure of angle 6? State the value and the type of angle pair you used to find the angle measure.
 Angle 6 = _____
 Angle relationship used: _____

13) Is the relationship between angle 6 and angle 9 complementary, supplementary, congruent, or none of these? State how you know.
 Angle 9 and angle 6 are _____
 Reason: _____

14) Find the angle measures of angle 7 and angle 8 and state what type of angle pair they are.
 Angle 7 = _____
 Angle 8 = _____
 Angle 7 and Angle 8 are _____

