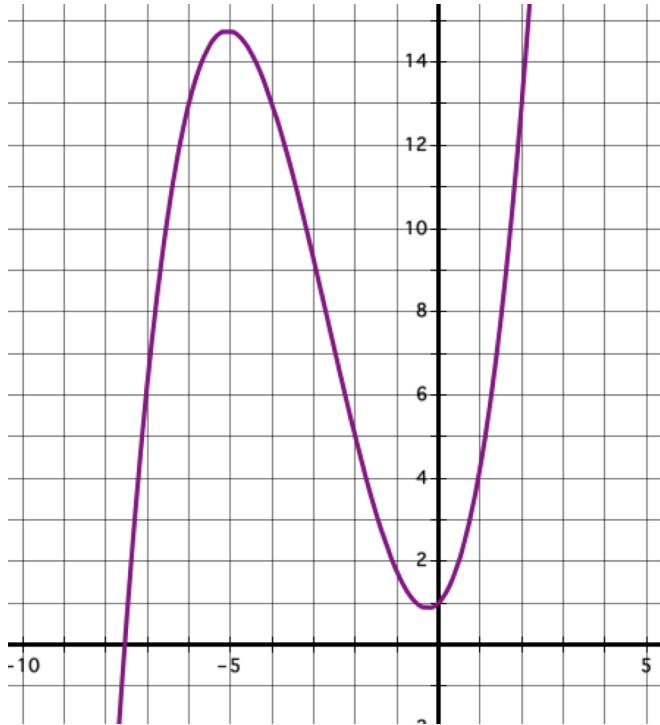


**PRACTICE TEST: RATE OF CHANGE**

**SHOW ALL YOUR WORK.** Be sure to include units for all rates of change.

1. Tristan lands himself a job at the American Institute of Architects in Washington, DC. His salary can be modeled linearly. His starting salary is \$65,000, and he is guaranteed an annual salary increase of \$3,000 per year.
  - a. Write an equation to model Tristan's salary.
  - b. What is the rate of change?
  - c. How much will Tristan's salary be in 7 years?
  - d. When will Tristan's salary be \$104,000?
  
2. Find the AROC on the interval of  $[2, 6]$  for the function  $g(x) = \frac{1}{2}x^2 + 3$ .

3. Given the graph below, find the AROC on the interval  $[-3, 1]$ .



4. The movie, *Straight Outta Compton*, was released on August 14, 2015 in theatres. Below is a table of the weekly gross income for the movie by weeks. Week 1 is the first week in theatres, and week 2 is the second week in theatres, etc. (<http://www.boxofficemojo.com/movies/>)

Wk	1	2	3	4	5	6	7	8
Gross \$	84,723,470	36,162,705	18,049,530	12,686,895	12,686,895	5,328,660	2,596,870	880,290

a. Find the AROC from week 1 to week 8.

b. Find the IROC at week 2.